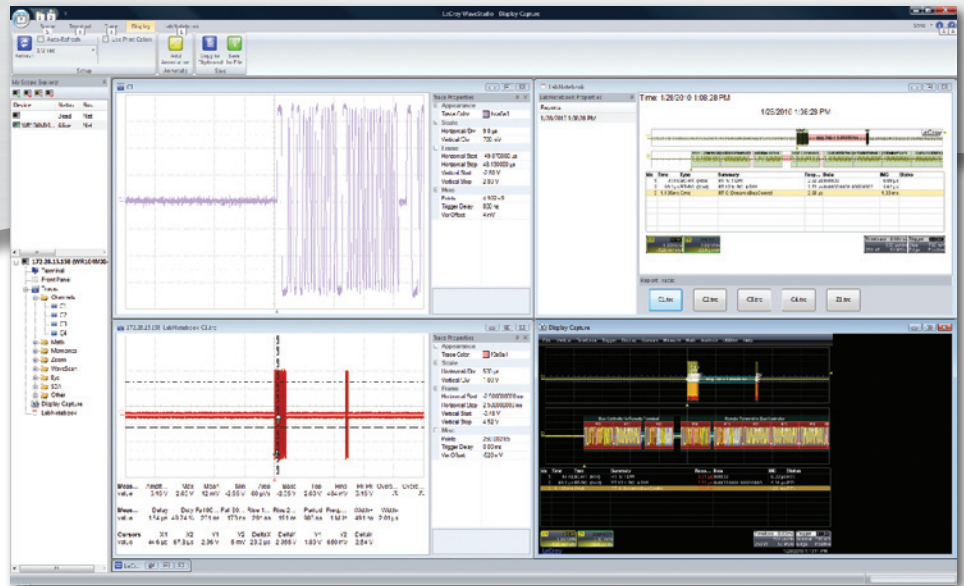


WaveStudio

Features and Benefits

- Easily capture analog and digital waveforms remotely from LeCroy oscilloscopes
- Import, view, and analyze LabNotebook™ files
- Load saved .trc or WaveML waveform files for offline analysis
- Analyze oscilloscope traces using x and y cursors and 21 built-in measurements
- Annotate waveforms with custom text boxes
- Control oscilloscope remotely using virtual screen and front panel
- Quickly zoom and pan to easily navigate through long waveform records
- Easily connect to the oscilloscope using the LAN, USB, RS-232, or GPIB interface
- Compatible with WaveMaster®, WavePro®, WaveRunner®, WaveSurfer® and WaveJet™



WaveStudio connects remotely to an oscilloscope for easy waveform or LabNotebook transfer.

WaveStudio is a fast and easy way to analyze acquired waveforms offline, or remotely control an oscilloscope from your desktop.

Capture

Loading a waveform or screenshot into WaveStudio can be performed in one of two ways, either offline or connected to the oscilloscope. When offline, simply open a trace file from a USB stick or e-mail attachment from the oscilloscope's save waveform function.

When connected to the oscilloscope, simply click on the display capture option to load a screen shot, or click a channel or channels to automatically load in the trace information.

View

WaveStudio presents the trace and screen shot views in tabs or windows. The tab view is ideal when many captures are stored. The window

view can tile or cascade up to four widows of data to help correlate related waveforms and provide a time synchronized view.

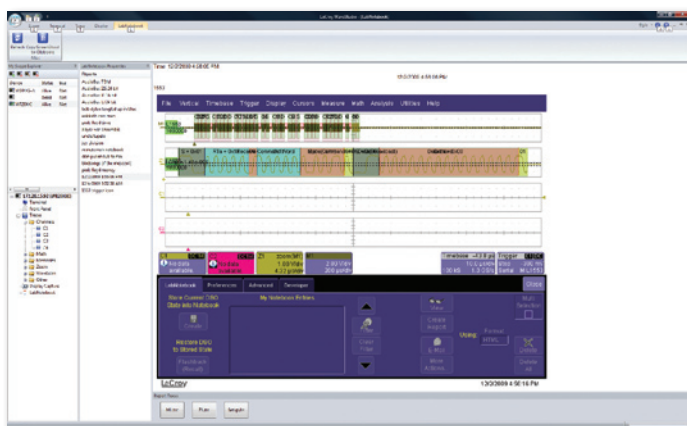
Analyze

WaveStudio provides x and y axis cursors for quick timing and amplitude measurements. For more precise values, use the built in 21 automatic measurements for accurate and quick results.

Document

WaveStudio makes it easy to document your work, whether the oscilloscope is next to you or is many miles away.

Save LabNotebook traces for future analysis, or save the screenshot as a .bmp, .jpg, .png, or .tif. Traces can be saved in binary or text formats.



With the push of a button, WaveStudio will display all of the LabNotebook entries stored on the oscilloscope. Easily view and save individual trace and setup files.

Supported Measurements

- | | | |
|-------------|--------------|--------------|
| • Amplitude | • RMS | • Fall 80–20 |
| • Max | • Pk-Pk | • Rise 10–90 |
| • Mean | • Overshoot+ | • Rise 20–80 |
| • Min | • Overshoot- | • Period |
| • Area | • Delay | • Frequency |
| • Base | • Duty | • Width+ |
| • Top | • Fall 90–10 | • Width- |

System Requirements

Your oscilloscope firmware must be at least version **6.0.1.x or higher**.

Your PC must be running **Windows® XP SP2, Windows® Vista, or Windows® 7** with **256 MB of RAM** and **2 GB** of free HDD space.



Remotely control oscilloscope via the LAN, USB, RS-232 or GPIB interface. Easily control the scope with a virtual front panel.

Supported Oscilloscopes

WaveMaster 8000/8Zi
WavePro 7000/7Zi
WaveRunner 6000
WaveRunner Xi/Xi-A
WaveSurfer 400/Xs/Xs-A
WaveJet*

* Supports only Display Capture and Terminal Modes

Download Information

www.lecroy.com/sw/WaveStudio

Customer Service

LeCroy oscilloscopes and probes are designed, built, and tested to ensure high reliability. In the unlikely event you experience difficulties, our digital oscilloscopes are fully warranted for three years and our probes are warranted for one year.

This warranty includes:

- No charge for return shipping
- Long-term 7-year support
- Upgrade to latest software at no charge

LeCroy

1-800-5-LeCroy
www.lecroy.com

Local sales offices are located throughout the world.
Visit our website to find the most convenient location.