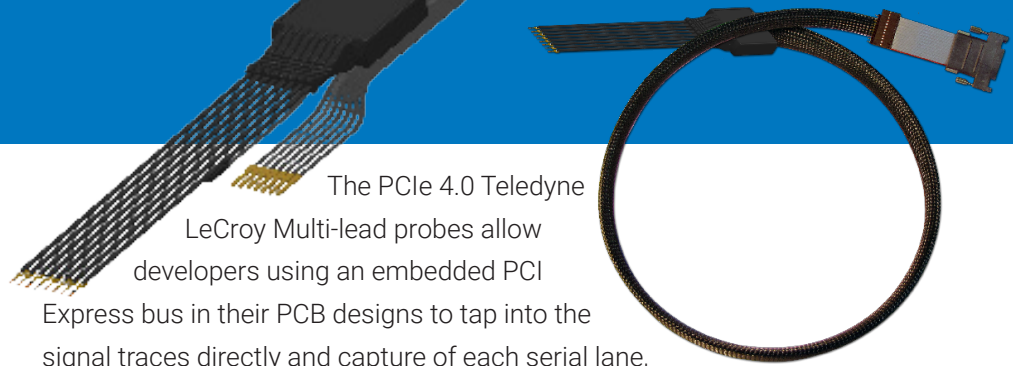




Multi-Lead Probe for PCI Express® 4.0



The PCIe 4.0 Teledyne LeCroy Multi-lead probes allow developers using an embedded PCI Express bus in their PCB designs to tap into the signal traces directly and capture of each serial lane, allowing flexibility to connect to any accessible points on the surface of the PCB. Each connection minimizes perturbation of the PCI Express bus signal using T.A.P⁴ technology while providing a reliable capture of all PCI Express traffic.

System Compatibility	
Summit T48	✓
Summit T416	✓

Key Features

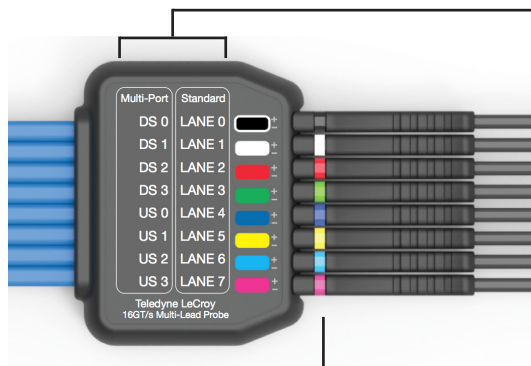
- Supports PCI Express 4.0
- Supports SRIS Clocking
- Captures all bus traffic at data rates up to 16 GT/s
- Covers unidirectional link widths up to x8 using one probe
- Uses T.A.P⁴ technology to minimize perturbation
- Sideband signal cable allows monitoring for: PERST# and WAKE#, CLKREQ#, and SMBus
- Lane Swizzling feature in Summit analyzers allows flexibility in probe connection

Teledyne LeCroy's Multi-lead probes use a precision probe tip for receiver-pair or transmitter-pair probing. The probe tip is attached to the multi-lead probe cable that connects to the protocol analyzer. Each Probe can support link widths of up to x8 unidirectional or x4 bi-directional using MultiPort mode at up to 16GT/s speeds. Multiple probes can also be used to simultaneously capture up to x16 bi-directional traffic. The probe will connect to a Teledyne LeCroy Summit™ T48 or T416 protocol analyzer via a multi-lead probe cable. Support is provided for PCI Express data rates including 2.5 GT/s, 5.0 GT/s, 8.0 GT/s, and 16GT/s at link widths. Sideband signals are supported on a separate cable attachment. The probes support SRIS clocking but access to host and device clock must be made available.



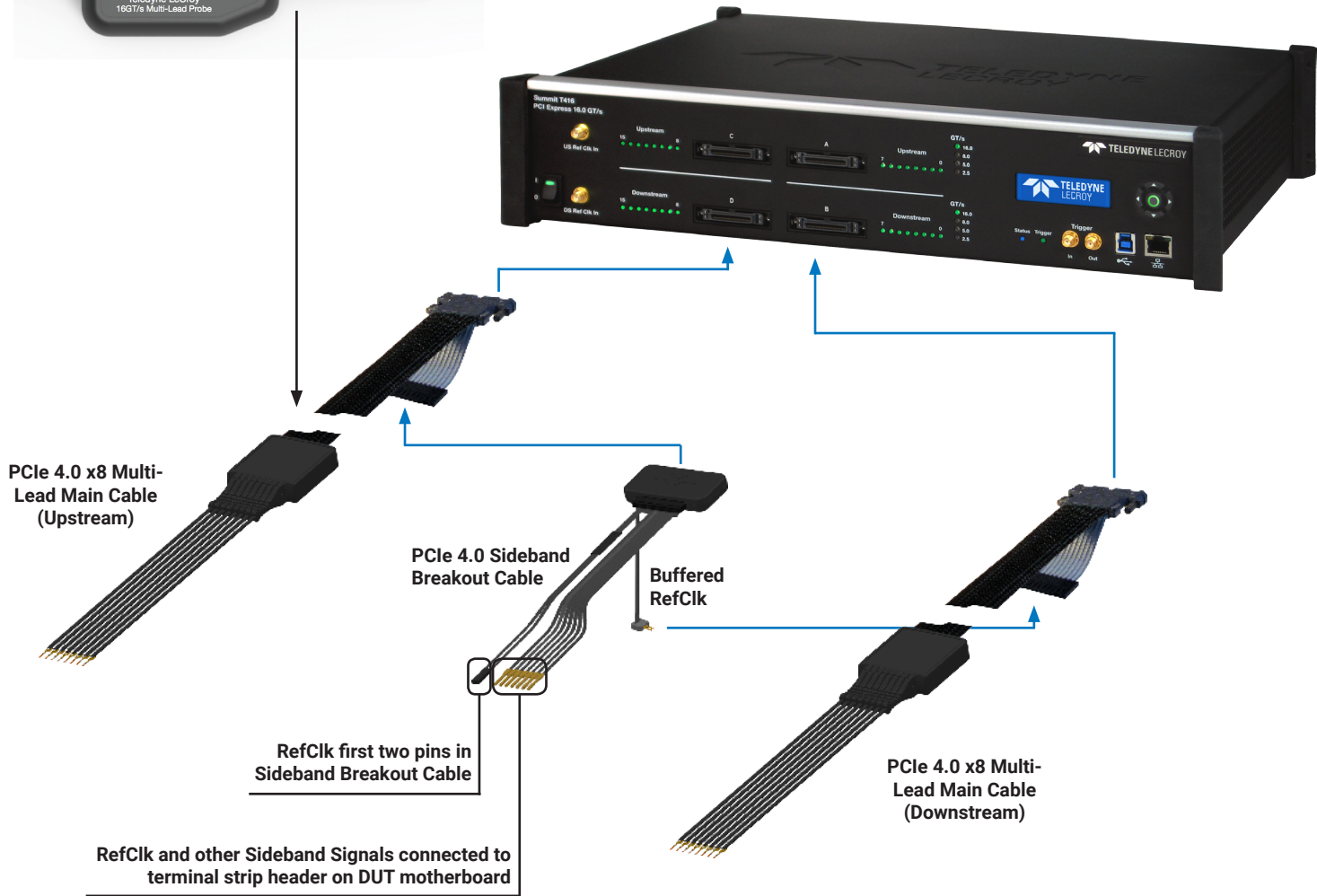
Specifications

Sideband Cable	936.5mm / 36.87"
Multi-Lead Cable	1000mm / 39.37" with 63.5mm/2.5" sideband mating part



When probe is used in MultiPort Mode, the Multi-Lead probe is a x4 bidirectional probe

When probe is not in MultiPort Mode, the Multi-Lead probe operates as a standard x8 unidirectional probe



Ordering Information

Product Description

- PCIe 4.0 x8 Multi-Lead Main Cable (connects T4 analyzer to probe tip)
- PCIe 4.0 Sideband Cable (one (1) sideband cable, one (1) Clk pod, and one (1) Refclk cable)
- PCIe 4.0 Sideband Cable Package (two (2) sideband cables)
- PCIe 4.0 Sideband Cable Pod Package (one (1) Clk pod and one (1) Refclk cable)
- PCIe 4.0 x1 Multi-lead Probe Kit (two (2) six inch probe tip cables)

Product Code

- PE100ACA-X
- PE101ACA-X
- PE102ACA-X
- PE103ACA-X
- PE164UIA-X



Local sales offices are located throughout the world.
Visit our website to find the most convenient location.

1-800-5-LeCroy • teledynelecroy.com

