

# 14<sup>th</sup> Annual QUG Conference

VIRTUAL MEETING of the  
QUIKLOOK USERS GROUP

August 12th, 2021

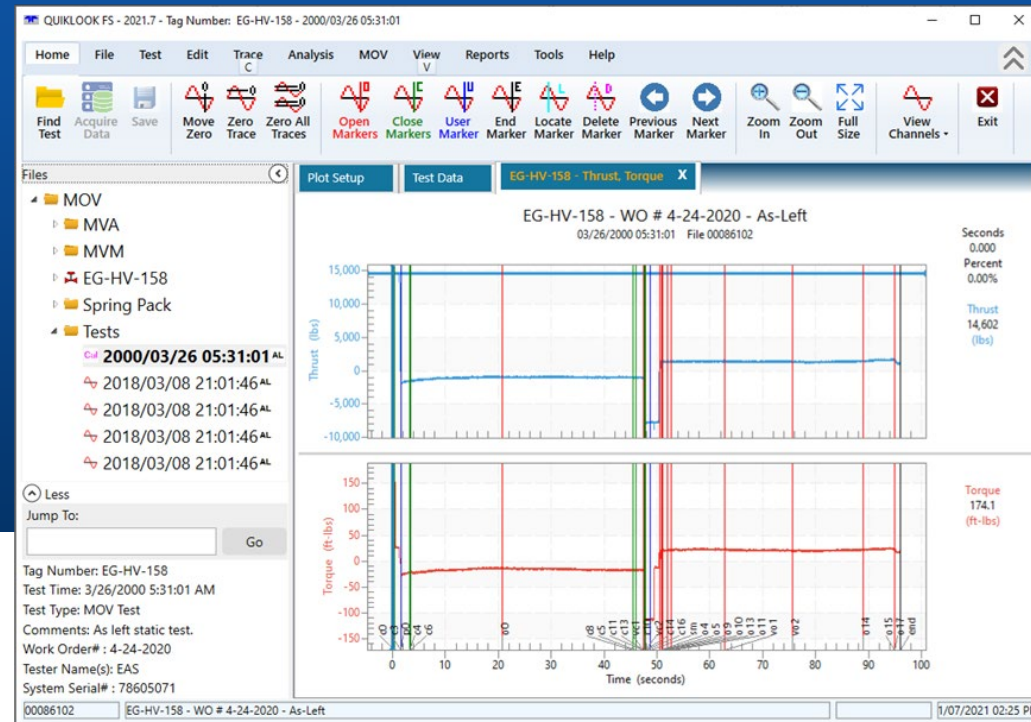
presentation by:

Joseph R. Santangelo, Director of Operations  
Samantha Bardasz, Software Engineer



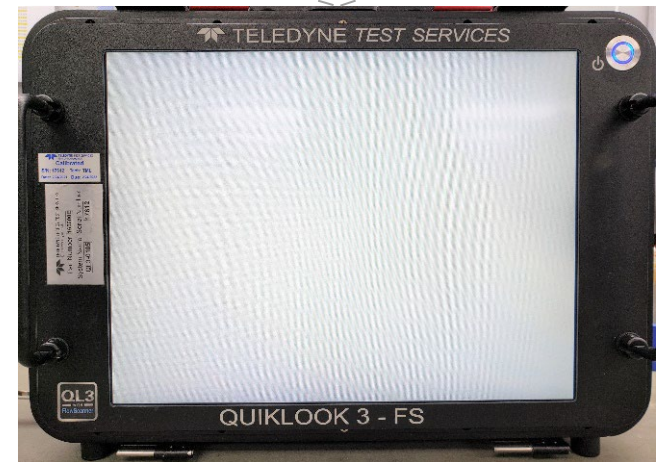
**TELEDYNE**  
**LECROY TEST SERVICES**  
Everywhereyoulook™

# QUIKLOOK FS SOFTWARE UPDATE





- When CMOS battery is depleted, QL3-FS loses touch screen and clock settings rendering the system inoperable
- CMOS battery should be replaced every 4 years by TLTS



QL3-FS System Numbers	QL3-FS Serial Numbers	Perform First CMOS Battery Replacement by:
QL3-0001 to QL3-0112	16512 to 17641	As Soon As Possible
QL3-0113 to QL3-0134	17775 to 18070	June 2021
QL3-0135 to QL3-0164	18140 to 18363	February 2022
QL3-0165 to QL3-0224	18364 to 18756	October 2022
QL3-0225 to QL3-0246	18757 to 19182	September 2023
QL3-0247 to QL3-0289	19835 to 20211	June 2024
QL3-0290 to QL3-0307	40011 to 40467	February 2025



## 2020 Release

- Version 2020.176
  - Released August 2020
- Included Numerous Minor Enhancements and Bug Fixes
- Add to Test Listing Grid - TOR & Work Order
- Improved Sentry Mode for Un-manned Acquisition



## 2020 Release

- Sine Wave Amplitude field validation incorrect

The test setup for a Sinewave test requires you to input an amplitude and mean.

These values need to be checked so that the resulting waveform is still within the control signal bounds.

This check was being done incorrectly preventing the user from inputting desired values.



## 2020 Release

- Testing only an I/P in Dynamic Scan Auto Analysis

When there is a remotely mounted I/P, and plants are forced to test them independent of the rest of the assembly.

QUIKLOOK FS' s Dynamic Scan analysis contains a Transducer Calibration plot and analysis that is used for the I/P.

This analysis was not performed unless all the channels required for the full Dynamic Scan Analysis were set.



## 2020 Release

- % Signal and % Travel added to Sine Wave, Stepped Ramp & Static Point

QUIKLOOK FS calculates a % Signal and % Travel channels for the Sensitivity and Step Study waveforms.

These channels were added to the Sine Wave, Stepped Ramp & Static Point tests.



## 2020 Release

- Static End Point - Missing Markers

QUIKLOOK FS for an AOV test has the ability to record Static End Points.

These points are recorded before the test is started while the valve is in a static condition.

After the test is complete QUIKLOOK FS will place markers on the trace which represent points closest to the static values recorded before the test was started.

Two of the four markers to be placed were not placed on the trace.

However, if the “Calculate Markers” function was performed after the test was complete, they would be placed properly.



## 2020 Release

- Hold After Test functionality not working correctly

QUIKLOOK FS has an option to Hold the last value of the control signal from a test waveform after the test is completed and then returned to the acquisition screen.

This was not happening.





## 2020 Release

- Add Pilot Travel to Analysis form

QUIKLOOK FS calculates the Pilot Travel for a pilot valve during a Dynamic Scan.

This value is shown on the Mechanical Properties but not on the analysis form.

It is added to the analysis form.



## 2020 Release

- Available Torque was added for Rotary Valves

For Dynamic Scan test QUIKLOOK FS calculates results based on the acquired data and placed markers.

For a rotary valve a new result “Available Torque” is added to the results calculated in addition to Seating Torque.

The equation for Available Torque:

$$Torque@msc = Abs(Pressure@msc * Area@msc * eff * MomentArm@msc)$$

$$Torque@map = Abs(Pressure@map * Area@map * eff * MomentArm@map)$$

$$AvailableTorque = Abs(Torque@msc - Torque@map)$$



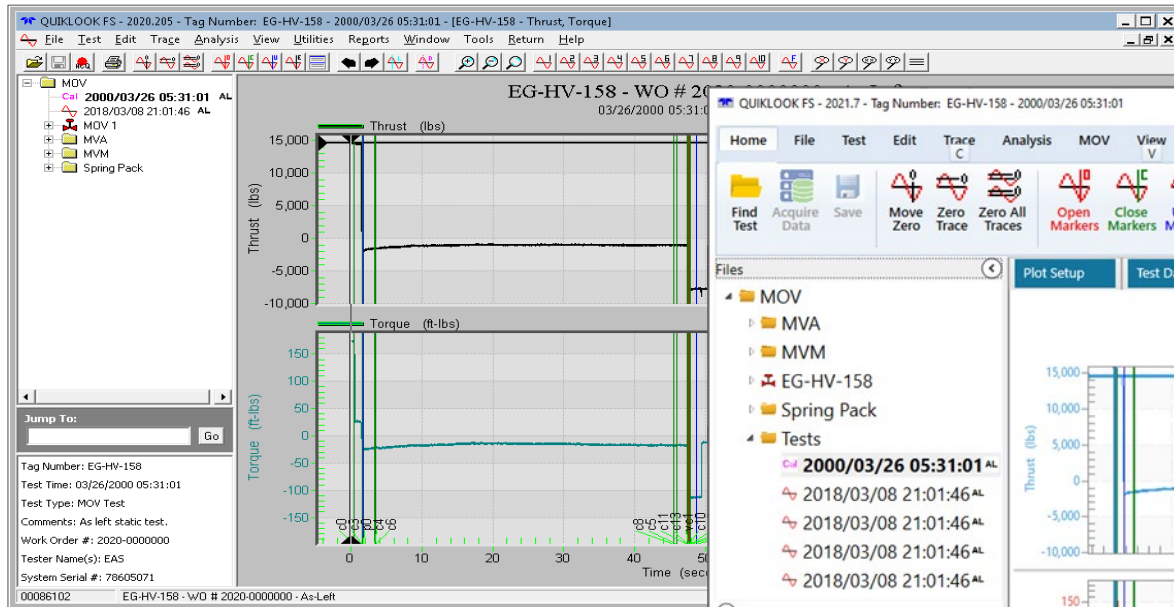
QUIKLOOK FS has many updated features including, but not limited to the following.

- Updated Interface
  - Bigger Buttons
  - Ribbon bar control
  - Easily expandable and collapsible
- User friendly
  - More Touch Screen Friendly
  - Multiple Tabs for better viewing of data
  - Single screen selections for ease of use
- Improved Efficiency
  - Reports load quicker
  - Network folders are now searchable

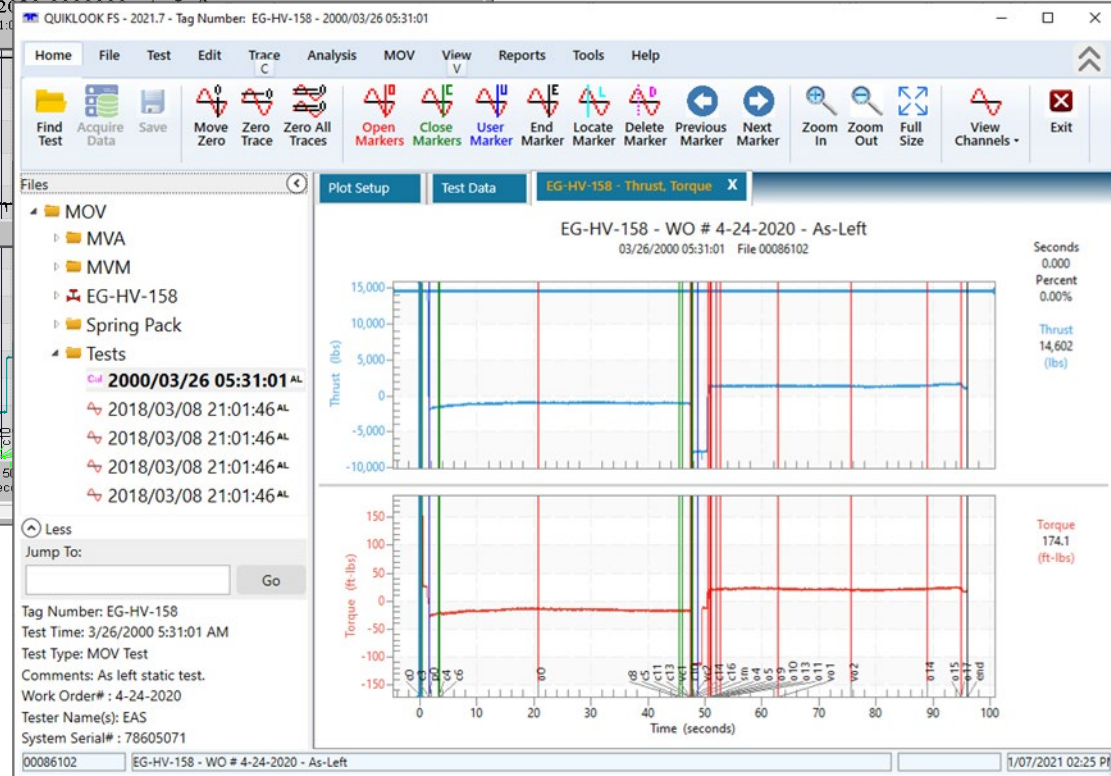


QUIKLOOK FS 2021 is new and improved, designed on a modern platform to provide a better user experience. It has an updated look with a more cohesive design.

## QUIKLOOK FS 2020



## QUIKLOOK FS 2021





Roger Masson, Vice President and General Manager  
Roger.Masson@Teledyne.com [1] 617-803-7973

Joe Santangelo, Director of Operations  
Joe.Santangelo@Teledyne.com [1] 508-542-6162

Michael Richard, Software Development Manager  
Joe.Gomes@Teledyne.com [1] 617-899-2984

Joe Gomes, Field Service Manager  
Joe.Gomes@Teledyne.com [1] 617-899-2984

Matthew Ferreira, Engineering Manager  
Matthew.Ferreira@Teledyne.com [1] 508-748-0103, x124

Samantha Bardasz, Software Engineer  
Samantha.Bardasz@Teledyne.com [1] 508-748-0103

# Any Questions?

Thank you  
for your time.



**TELEDYNE**  
**LECROY TEST SERVICES**  
Everywhereyoulook™